



戴德森醫療財團法人
嘉義基督教醫院
CHIA-YI CHRISTIAN HOSPITAL

Operations during the COVID-19 pandemic

A Real Story in a Hospital

Mei-Ling Hsu

Director of IT Department

Ditmanson Medical Foundation Chia-Yi Christian Hospital

2021/03/01

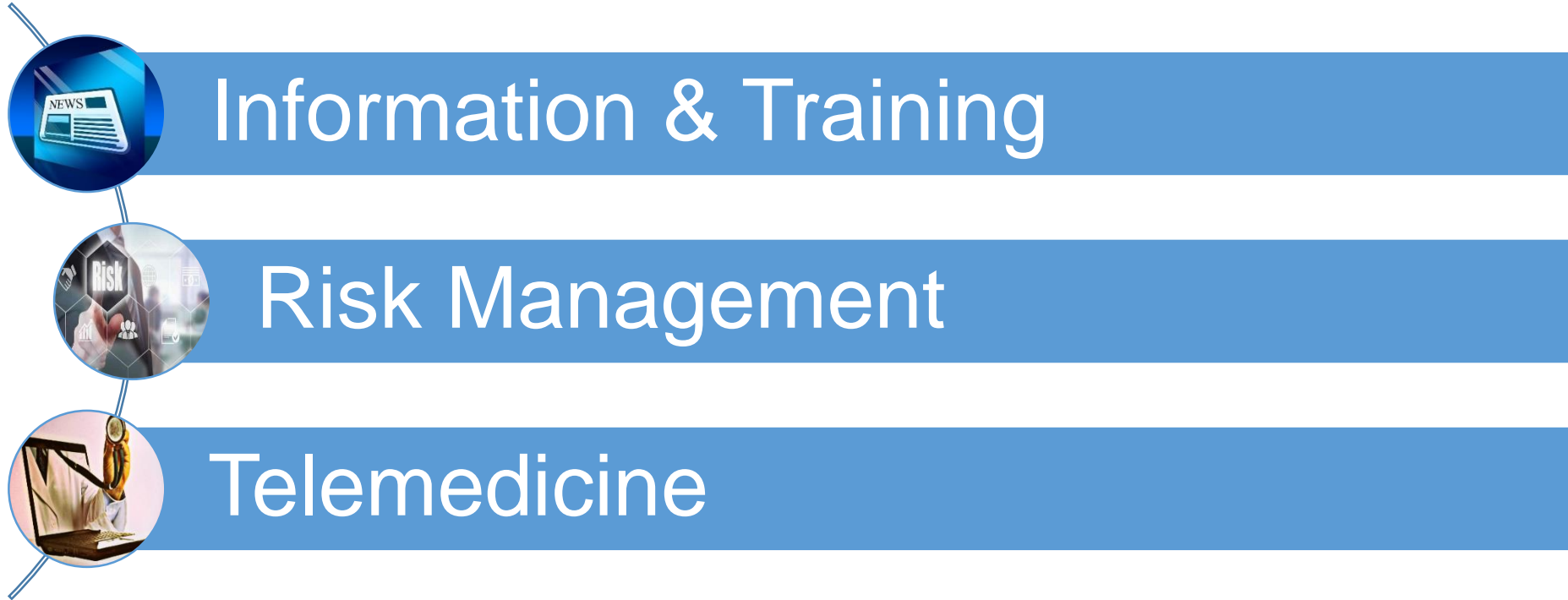


Ditmanson Medical Foundation Chia-Yi Christian Hospital

- 1072 Beds
- ~ 4110 Outpatient visits/day
- ~ 250 Emergency visits/day
- 40 different medical specialties



Fighting the COVID 19 pandemic



Taiwan's NHI (National Health Insurance) Infrastructure



NHI Cards

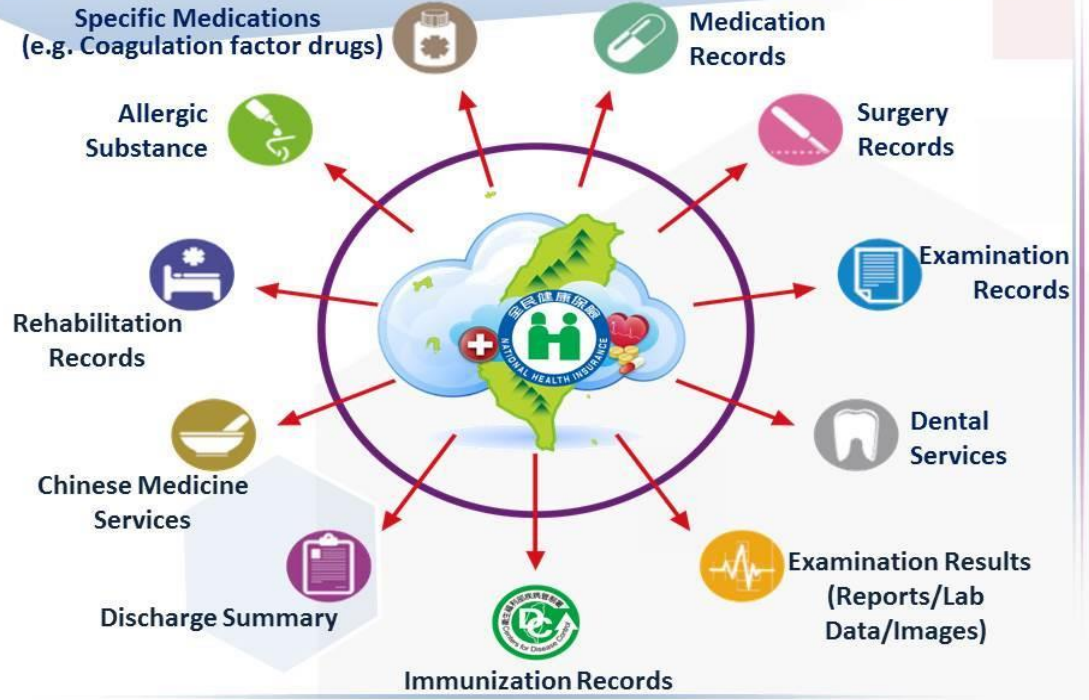
- Heavy-user detection & management
- Infectious disease tracing & monitoring
- Daily updates of medical visit data
- Simplification of management process



1. Last Six Medical Visits
2. Drug Prescriptions, Drug Allergies
3. Catastrophic Diseases
4. Organ Donation Consent
5. Palliative Care
6. Do not resuscitate (DNR)



NHI MediCloud System



(source : NHI)



TOCC Inquiry on MediCloud

Warning remarks in The NHI MediCloud to manage cases

※查無此身分證號或居留證號之30天內旅遊或接觸史資料！

此個案為航空公司機組人員(請詢問其TOCC!)。

【連假後請醫師加強COVID-19通報及採檢！】
 具有發燒或有呼吸道症狀、嗅覺、味覺異常或不明原因之腹瀉等症狀，或醫師高度懷疑之社區型肺炎之病人，只要醫師認為有進行SARS-CoV-2檢驗必要，都可進行通報採檢(如需轉診採檢，請開立電子轉診單並通知當地衛生局)。
 (參考資料請按我：[具感染風險民眾追蹤管制機制](#)、[國際旅遊疫情建議等級](#)、[COVID-19病例暨採檢送驗注意事項](#))

採檢對象-109/04/08已轉診至貴院採檢，尚未完成採檢！請務必於當日完成採檢！

關閉

本查詢作業資料由內政部移民署提供(對人出境資料有疑問，請洽移民署客服電話：(02)23889393分機5600)；如有其他疑問請洽防疫專線1922。

TOCC Remarks

Guidelines on screening

An incomplete screening warning for this suspected case

醫審及藥材組 / 10 **Public announcement on NHIVPN front page**

具有發燒或有呼吸道症狀、嗅覺、味覺異常或不明原因之腹瀉等症狀，或醫師高度懷疑之社區型肺炎之病人，只要醫師認為有進行SARS-CoV-2檢驗必要，都可進行通報採檢(如需轉診採檢，請開立電子轉診單並通知當地衛生局)。[詳細資料...](#)

For those lifted the home quarantine/home isolation order will be put on an order of 7-day self-management for health.

(source : NHI)

Entrance Guard

- Temperature check 、TOCC check 、Provide Hand Sanitizer



Employee's temperature monitor

部門 日期 2021-03-01 回報率(小於)

日期	部門	發燒/有症狀人數	已回報	總上班人數	回報率 (%)
2021-03-01	資訊室	0	27	28	96.43

每頁行數 全部 1-1 of 1

員工體溫回報

日期 2021-03-01 時間 11:53

體溫類別 額溫 體溫°C

有呼吸道相關症狀 否

回報



Name-based System for Mask

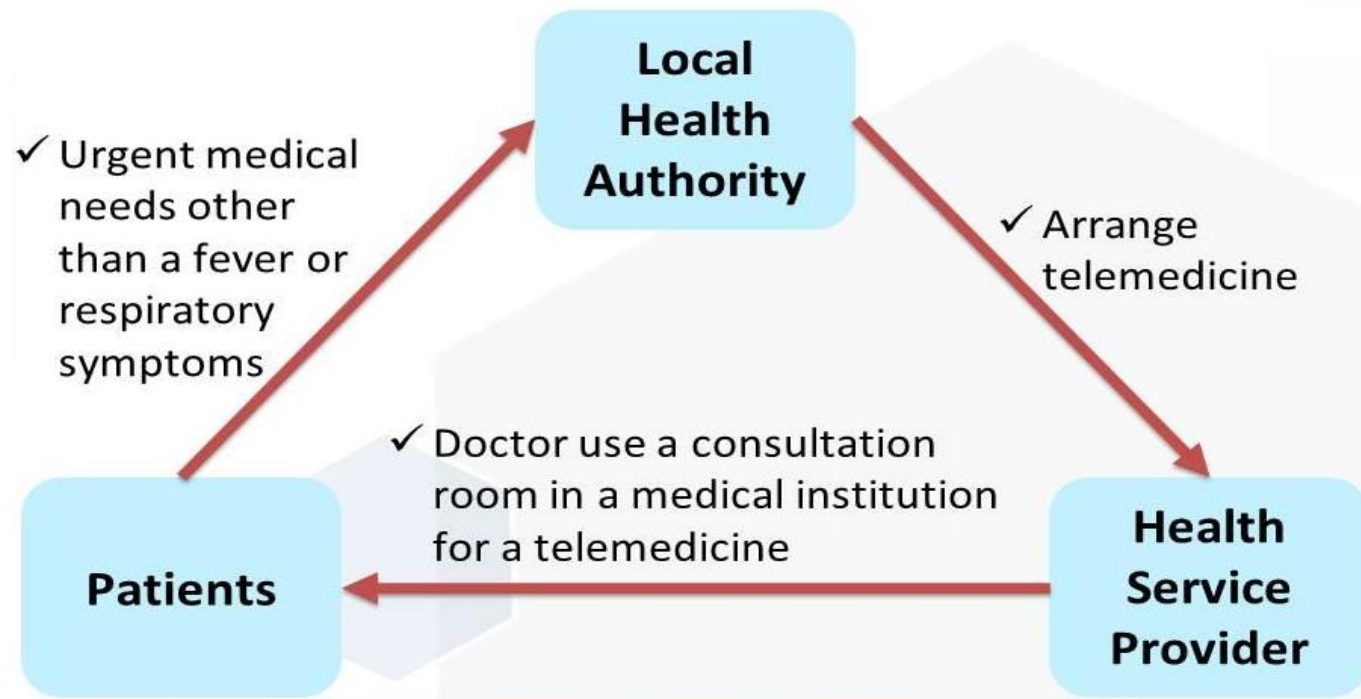
- Name-based 1.0 : Purchase at pharmacies
- Name-based 2.0 : Online Purchase
- Name-based 3.0 : Order on Kiosk



(source : NHI)



Telemedicine for people in home isolation and home quarantine



(source : NHI)



Others

- Long-term prescription for Chronic disease
 - Drive through pharmacy service
 - Reservation first, drive through, delivery window



Post pandemic

- Digital transformation v.s. Next generation network
- IoT
- Tele-medicine
- 5G

- Traveling -> digital travel , VR/AR, Video Conference, Remote operation

